

BAXI Luna Blue (18.i)

Refilling of your heating

DAMIT'S
1a WIRD!

GAS - WASSER - HEIZUNG

1a
Installateur

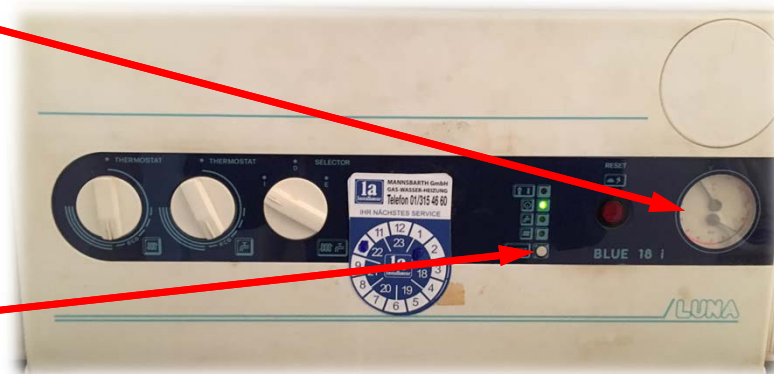
MANNSBARTH



1. Turn the handle to increase the pressure and close the valve when the heating has its right pressure

2. Watch the pressure. In a flat with 1 floor it should be between 1,2-1,5 bar

3. If the display shows an error, than you have to push that button to reset the electronic



The company Mannsbarth GmbH assumes no liability of any damage at your heating system

Mannsbarth GmbH - Liechtensteinstraße 112, 1090 Wien - 01/315 46 60 - office@mannsbarth.at - mannsbarth.at